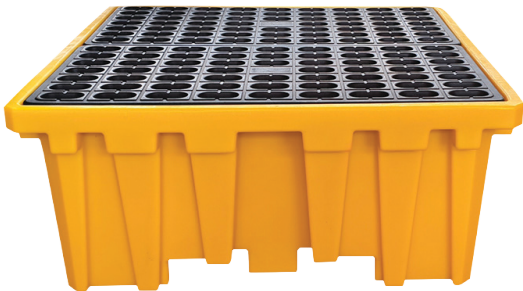


SINGLE IBC SPILL CONTAINMENT

THE PRATT SINGLE IBC SPILL CONTAINMENT BUND PROVIDES A SAFE, CONVENIENT, AND EFFECTIVE FACILITY TO STORE A SINGLE IBC CONTAINER.

FEATURES & BENEFITS:

- UV-stabilised linear low-density polyethylene (LLDPE).
- Excellent chemical resistance and will not rust or corrode.
- Allows safe and convenient IBC tank handling and dispensing.
- Large capacity spill containment bund.
- Accessible from either side.
- Can be lifted by forklift.
- Nestable design for efficient storage and shipping.



SPECIFICATIONS:

MATERIAL:	UV-stabilised Linear Low Density Polyethylene (LLDPE)
WEIGHT:	96.2-97 kg
SUMP CAPACITY:	1400 L
UNIFORM LOAD CAPACITY (UDL):	2000 kg
FORKLIFT ACCESS:	Dual-ended

DIMENSIONS		
LENGTH	WIDTH	HEIGHT
1600mm	1600mm	700mm



IMPORTANT USAGE NOTES

- Ensure stored liquids are chemically compatible with polyethylene.
- Do not exceed the maximum load rating.
- Regularly remove any liquids collected in the sump.
- Ensure largest container volume does not exceed sump capacity.
- Designed for temporary use and recommended for temperate Australian climates.



UV-STABILISED
LINEAR LOW DENSITY
POLYETHYLENE (LLDPE)

*Disclaimer: IBC not included.